

For Residential and Commercial Applications

Job Name _____

Contractor _____

Job Location _____

Approval _____

Engineer _____

Contractor's P.O. No. _____

Approval _____

Representative _____

Series IPF

Isolation Pump Flanges for Circulator Pumps

Sizes: ¾" – 2" (20 – 50mm)

Series IPF Isolation Pump Flanges are designed to isolate circulator pumps to facilitate circulator pump replacement or repair.

Features

- Brass body and flange
- Adjustable Virgin PTFE packing
- Buna-N stem O-ring seal
- Supplied with lever handle
- Optional T-handle included
- Virgin PTFE seats
- Bottom loaded, blowout proof stem

Models

IPF-T-M1 ¾" – 2" (20 – 50mm) NPT threaded end connection

IPF-S-M1 ¾" – 2" (20 – 50mm) Solder end connection

Specifications

Approved isolation pump flange of 2-piece design constructed of brass body and end adaptor. Pump flange shall have adjustable PTFE packing and a Buna-N O-ring on a brass stem with virgin PTFE seats. Valve to be pressure rated to 600psi (41.4 bar) WOG. Valves rated to 400psi (27.6 bar) WOG or less are not acceptable. Approved valve is a Watts Regulator Company Series IPF-T-M1 (threaded) or IPF-S-M1 (solder).



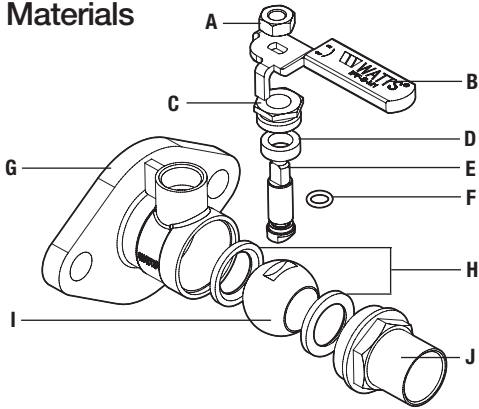
*This valve is designed to be soft soldered into lines without disassembly, using a low temperature solder to 420°F (216°C). Higher temperature solders may damage the seat material.

Apply heat with the flame directed AWAY from the center of the valve body. Excessive heat can harm the seats.

WATTS®

Watts product specifications in U.S. customary units and metric are approximate and are provided for reference only. For precise measurements, please contact Watts Technical Service. Watts reserves the right to change or modify product design, construction, specifications, or materials without prior notice and without incurring any obligation to make such changes and modifications on Watts products previously or subsequently sold.

Materials



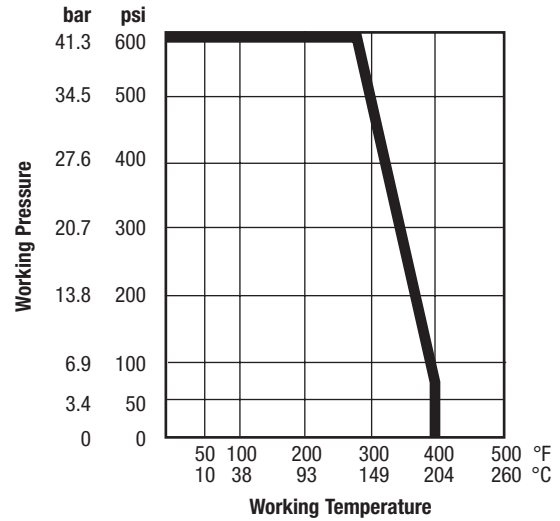
- A – Handle nut: Brass
- B – Handle: Steel with vinyl insulator
- C – Packing Nut: Brass
- D – Stem Packing: Virgin PTFE
- E – Stem: Brass
- F – Stem O-ring: BUNA-N
- G – Body/Flange: Brass
- H – Seats: Virgin PTFE
- I – Ball: Chrome-plated Brass
- J – Adapter: Brass

Pressure – Temperature

Maximum Working Pressure: 600psi (41.4 bar) WOG

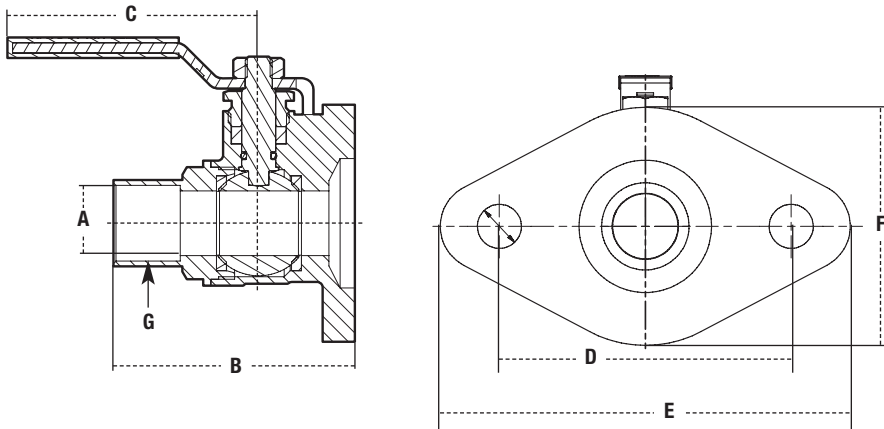
Maximum Temperature: 406°F (208°C) at 100psi (6.9 bar)

Temperature – Pressure Rating



* See applicable note on reverse side for solder end valves with regards to pressure/temperature rating.

Dimensions – Weights



SIZE		DIMENSIONS										WEIGHT				
(DN)		A		B		C		D		E		F		G	lbs.	kg
in.	mm	in.	mm	in.	mm	in.	mm	in.	mm	in.	mm	in.	mm	in.		
IPF-T-M1																
3/4	20	3/4	19	2 1/4	54	3	77	3 3/16	80	4 5/8	118	2 11/16	69	3/4" NPT	1.3	.61
1	25	1	25	2 5/8	63	3	77	3 3/16	80	4 5/8	118	2 11/16	69	1" NPT	1.6	.72
1 1/4	32	1 1/4	31	2 13/16	72	4	107	3 3/16	80	4 5/8	118	2 11/16	69	1 1/4" NPT	2.1	.97
1 1/2	40	1 1/2	39	3 1/4	79	4	107	3 3/16	80	4 5/8	118	2 11/16	69	1 1/2" NPT	2.5	1.13
2	50	1 7/8	47	3 3/4	90	4	107	3 3/16	87	4 5/8	118	2 11/16	69	2" NPT	2.5	1.16
IPF-S-M1																
3/4	20	3/4	19	2 1/8	54	3	77	3 3/16	80	4 5/8	118	2 11/16	69	—	1.3	.60
1	25	1	25	2 1/2	63	3	77	3 3/16	80	4 5/8	118	2 11/16	69	—	1.6	.72
1 1/4	32	1 1/4	31	2 13/16	72	4	107	3 3/16	80	4 5/8	118	2 11/16	69	—	2.1	.97
1 1/2	40	1 1/2	39	3 1/8	79	4	107	3 3/16	80	4 5/8	118	2 11/16	69	—	2.5	1.13
2	50	1 7/8	47	3 1/2	90	4	107	3 3/16	87	4 5/8	118	2 11/16	69	—	3.0	1.36



Water Safety & Flow Control Products



USA: 815 Chestnut St., No. Andover, MA 01845-6098; www.watts.com

Canada: 5435 North Service Rd., Burlington, ONT. L7L 5H7; www.wattscanada.ca