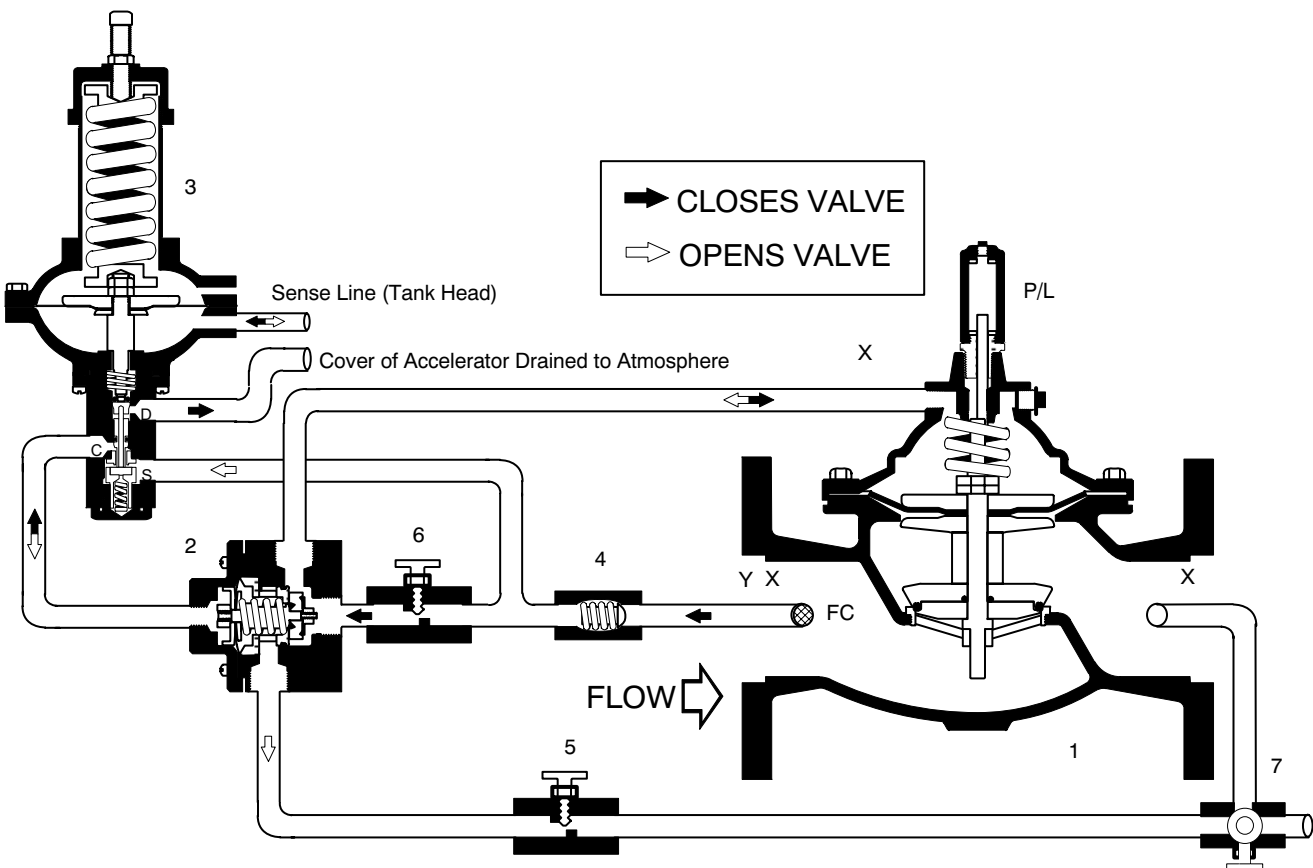


ALTITUDE VALVE - ONE WAY FLOW (TANK FILL)

ACV
**127-1/
6127-1**

VALVE FUNCTION

- Opens when reservoir level drops below pilot setting (adjustable)
- Closes when reservoir level reaches pilot setting



Flow Direction Shown: Under the Seat
Optional "R" Flow Over the Seat: 127-1R/6127-1R

COMPONENTS

- 1 - Main Valve
- 2 - Fig. 22-1 Accelerator Control
- 3 - Fig. 27 Altitude Control
- 4 - Check Valve
- 5 - Needle Valve - Adj. Opening Speed
- 6 - Needle Valve - Adj. Closing Speed
- 7 - 3-Way Ball Valve
- P - Position Indicator
- FC - Flo-Clean Strainer

ACCESSORIES

Located as indicated
Included as marked

- X - Isolation Cocks
- Y - Y-Strainer
- L - Limit Switch